



**Halsey Taylor**  
Satisfying Thirsts Since 1912

**Puritan**  
Filtered Coolers

## MODEL SCWT8A-WF-Q



This water cooler is certified to  
**NSF/ANSI 61.**

### GENERAL

Self-contained, electric refrigerated, free-standing water cooler with filter designed to be easily accessible to able-bodied individuals. Unit is certified to NSF/ANSI 61 and meets requirements of the Safe Drinking Water Act. Unit provides 50° F water at 80° F inlet water and 90° F ambient.

### LEAD REDUCTION FILTER

Halsey Taylor Water Cooler With Filter is equipped with the Water Sentry HWF 172 lead reduction system which is designed to remove cysts, such as cryptosporidium and giardia, lead particles and chlorine. Also reduces odors and discoloration from incoming water. The filter has been tested to the following NSF International standards: NSF/ANSI Standards 42 Chlorine, Particulate, and Taste and Odor. NSF/ANSI Standard 53 for Reduction of Lead and Cyst. Features include Quick-Disconnect 1/4 turn installation. Has automatic inlet shut-off valve that closes when filter is removed. Filter should be replaced every 1,500 gallons (5678 liters) or approximately one (1) year after installation. Use part number 55897C when ordering replacement filter.

### CABINET

Heavy-gauge vinyl clad steel. Resistant to wear, moisture, perspiration, heat, and sunlight. Optional Stainless Steel is available.

### COOLER TOP

Non-corrosive stainless steel cooler top, number 300 series with satin finish resists stains and corrosion and is easy to maintain. Anti-splash ridge reduces splatter. Contoured to insure proper drainage.

### BUBBLER

Exclusive one-piece, chrome-plated two-stream mound-building bubbler with non-removable anti-squirt feature and integral hood insures a satisfying drink of water.

### PUSHBUTTON ACTUATION MECHANISM

Self-closing, vandal-resistant pushbutton does not require grasping or twisting.

### AUTOMATIC STREAM HEIGHT REGULATOR

Self-closing assembly is located inside unit to prevent tampering. Unit resists corrosion and liming. A constant stream height is automatically maintained under line pressures that vary from 20 to 105 psi.

### INLET STRAINER

Easily cleaned in-line strainer screen traps particles of 140 microns or larger before they enter the waterway.

### TEMPERATURE CONTROL

Positive sensing thermostat for controlling temperature of storage tank water. Factory set at 50° F Adjustable  $\pm 5^{\circ}$  F.

### STORAGE TANK

Non-pressurized stainless steel evaporator/storage tank for long life. Waterways are certified to NSF/ANSI 61, far exceeding the requirements of the Safe Drinking Water Act.

### REFRIGERATION SYSTEM

Hermetically sealed, positive start compressor with lifetime lubrication and built-in overload protection, efficient capillary sizing, large capacity dryer-strainer, and self-lubricated fan cools copper/aluminum condenser. System uses R134A refrigerant. Protected by Halsey Taylor's Limited 5 Year Warranty.

### VENTILATION

Insure proper ventilation by maintaining 6" (152mm) minimum clearance from cabinet louvers to wall.

### SUGGESTED SPECIFICATIONS

Shall deliver 8.0 GPH of 50° F water at 90° F ambient and 80° F inlet water. Shall have lead reduction filter and stainless steel basin with removable drain strainer. Bubbler shall be two-stream, mound- building type. Separate valve and automatic stream regulator shall be mounted within cabinet. Refrigeration system shall employ high efficiency, positive start compressor using R134A, non-pressurized tank with totally encapsulated insulation and be controlled by positive sensing thermostat. The manufacturer shall certify the unit to meet the requirements of NSF/ANSI 61, and the Safe Drinking Water Act. Unit complies with ARI Standard 1010.

NOTE: Continued product improvement makes specifications subject to change without notice. See Halsey Taylor website for most current spec sheet.

## Deluxe Free-Standing Cooler With Filter



Standard finish is Platinum Vinyl

### Optional Finish (extra cost)

☐ All Stainless Steel

### Optional Accessories (extra cost)

- ☐ Glass Filler Kit
- ☐ Sump Pump Kit
- ☐ Back Panel 27082C
- ☐ Vandal-Resistant Kit
- ☐ Foot Pedal Kit
- ☐ Easy Flex™ Bubbler
- ☐ Coffee Server (factory installed only)

Trap and service stop not included.

JOB NAME: \_\_\_\_\_

\_\_\_\_\_

ENGINEER/CONTRACTOR NAME: \_\_\_\_\_

APPROVAL: \_\_\_\_\_

DATE: \_\_\_\_\_

### SCWT SERIES

Model No.	GPH Capacity Cooled to 50° F*				Base Rate Cap.	F.L. Amps	Shipping Weight lb.	Rated Watt Usage
	Ambient Air Temp							
	70°F	80°F	90°F†	100°F				
SCWT8A-WF-Q	9.2	8.4	7.6	6.8	7.6	4.0	76	370

\* With projector service and tap water at 80° F.

† UL listed and complies with ARI Standard 1010

halseytaylor.com

HALSEY TAYLOR, 2222 CAMDEN COURT, OAK BROOK, ILLINOIS 60523



## SCWT8A-WF-Q

### Deluxe Free-Standing Cooler With Filter

(CONTINUED)

#### ROUGH-IN, MOUNTING, AND ELECTRICAL INSTRUCTIONS

This cooler may be installed against the wall or freestanding from the wall.

**NOTE:** With slight modifications, rough-in heights from 16.5" and 24.3" can be accommodated. 2" maximum may be cut from the tailpiece provided.

#### For against-the-wall installation

Provide 2" x 4" wood blocking back of finished wall for securing cooler flush with finished wall. (Refer to rough-in drawing.) Install 1 1/4" trap 5 1/4" from wall face to center of trap inlet. Trap not furnished. Install 3/8" IPS service stop to building supply line.

Trap and service stop not included.

#### OPERATING PRESSURES:

Supply water-105 psi maximum

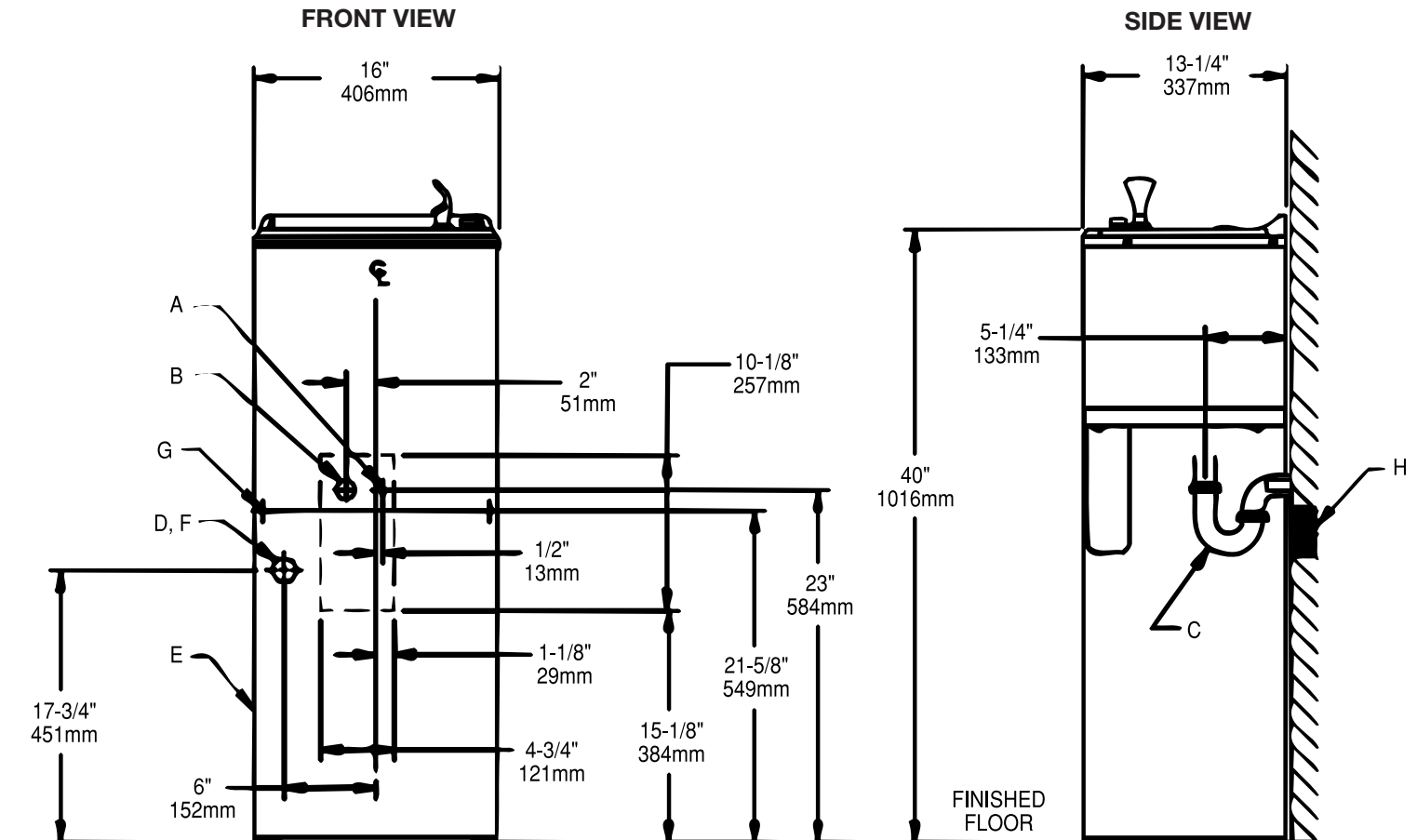
#### ELECTRICAL

Electrical receptacle to be installed to receive 3-wire parallel blade grounding type male plug. Note cord length is 4 feet from cord exit point in cooler. Cooler can now be mounted against the wall and secured to blocking with two wood screws. Be sure 1 1/4" O.D. slip connection tube from cooler waste to trap is in line. Connect water supply line to 3/8" tubing inlet connection located inside of cabinet below shelf.

#### For freestanding installation

A hole is provided in back of cabinet for plumbing entrance. See rough-in drawing and outline drawing. Install 1 1/4" IPS trap inside cabinet. Trap not furnished. Install 3/8" IPS service stop to building supply line outside of cooler cabinet. Service stop not furnished. Connect water supply from building to 3/8" tubing inlet connection located inside of cabinet below shelf.

**NOTE:** Installation outdoors in an unprotected environment is not recommended.



#### LEGEND:

- A = RECOMMENDED WATER SUPPLY LOCATION 3/8" O.D. UNPLATED COPPER TUBE CONNECT STUB 1-1/2" (38mm) OUT FROM WALL SHUT OFF BY OTHERS
- B = RECOMMENDED LOCATION FOR WASTE OUTLET 1-1/2" O.D. DRAIN
- C = 1-1/4" TRAP NOT FURNISHED
- D = ELECTRICAL OUTLET LOCATION
- E = INSURE PROPER VENTILATION BY MAINTAINING 4" (102mm) MIN CLEARANCE FROM CABINET LOUVERS TO WALL
- F = POWER CORD 4" (1219mm) LONG
- G = WALL SCREW HOLES
- H = 2 x 4 BLOCKING

NOTE: Minimum wall clearance for air flow is 4" (102mm) on either side.

NOTE: A service supply stop must be installed at the cooler inlet line.

**Halsey Taylor®**